

21st Century School Buildings Plan

SCHOOL Medfield Heights Elementary School
COMMUNITY MEETING Concept Design | June 6, 2018



Introductions

Nicole Price

Community and Public Relations Director
21st Century School Buildings Program
City Schools

Michael McBride

Design Director
21st Century School Buildings Program
City Schools

Joe Mayzck

Project Manager – Maryland Stadium Authority

Design Collective | Samaha JV

Meredith Sullivan, Project Manager
Amy McCarty, Project Architect

Agenda

- 21st Century School Buildings Program
- School Size and Program Requirements
- Academic Planning Process
- Existing Conditions
- Design Studies
- Site Design
- Floor Plans
- Exterior Views and Landscape
- Feedback

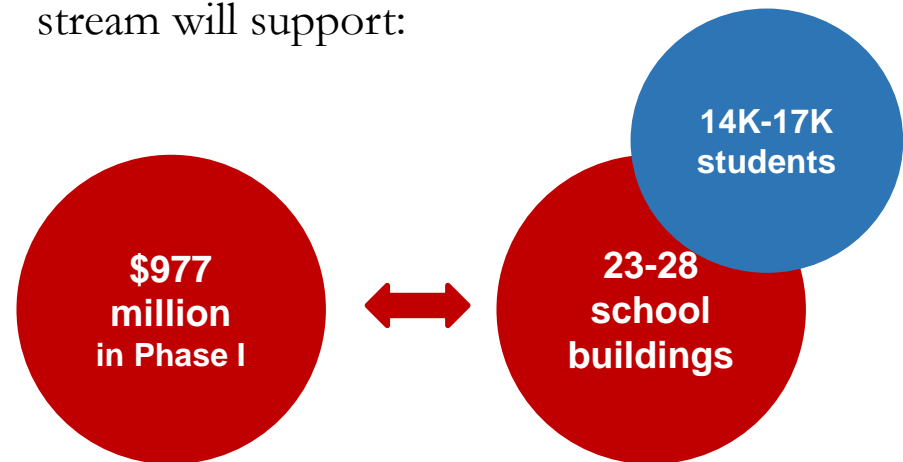
21st Century School Buildings Program

The Baltimore City Public School System (City Schools) Construction and Revitalization Act of 2013 resulted in a partnership between:

- The State of Maryland
- Baltimore City
- City Schools

Each contribute \$20 million annually towards the plan.

Current estimates suggest the funding stream will support:



City Schools' Plan is one of the largest public works project in Baltimore City to date.

Investment in buildings, students and communities

Overall the facilities revitalization project has three goals:

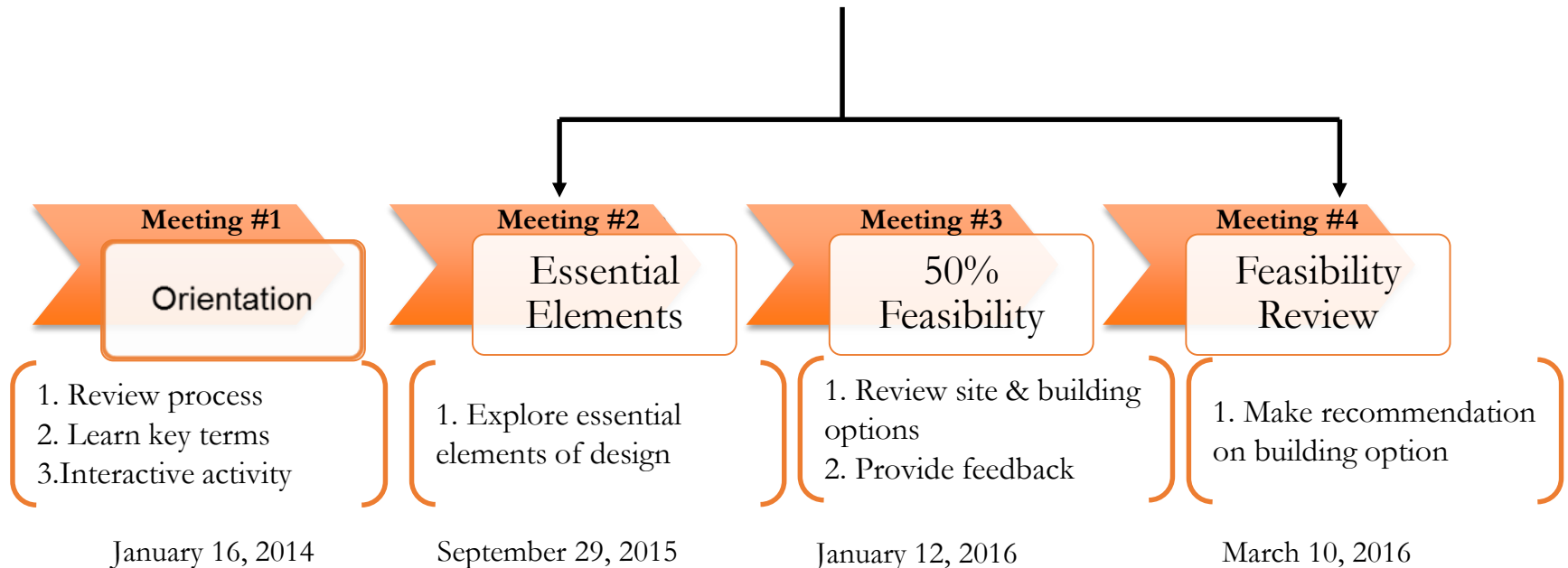
- (1) to transform student opportunities and achievement;
- (2) improve engagement and well-being of communities;
- (3) help revitalize neighborhoods and communities.

Educational Specification & Feasibility Study



September 2015-March 2016

Planning: 6-8 Months



Shift in Timeline: *Details of Activity*

January 16, 2014	September 29, 2015	January 12, 2016	March 10, 2016	???	Board Approval	Start of Design
Orientation	Essential Elements	50% Feasibility Study Meeting	95% Feasibility Study Meeting		July 2017	Fall/Winter 2017



A place children are sad to
leave at the end of the day
Reflect diverse population and community
Flexible furniture 21st C. Technology
Natural Light
connection

Medfield Summary of Spaces

(6) Classrooms for PreK and Kindergarten	(2) Music Rooms
(6) Classrooms for 1 st and 2 nd grades	(1) Art Room
(9) Classrooms for 3 rd , 4 th and 5 th grades	Administration / Student Services
(2) Special Education Classrooms	Media Center
(5) Collaborative Learning Areas	Cafeteria with Stage
(1) Elementary Science Classroom	Gymnasium
(1) Technology Education Lab	Community Space

Existing Site Plan



- 1 Modular addition creates site circulation problems
- 2 No drop-off or pull-off present at main entry for busing and student pick-up/drop-off
- 3 +20 foot grade change from upper building site to lower play areas
- 4 Service / Loading
- 5 Existing Playground

← One-Way Traffic

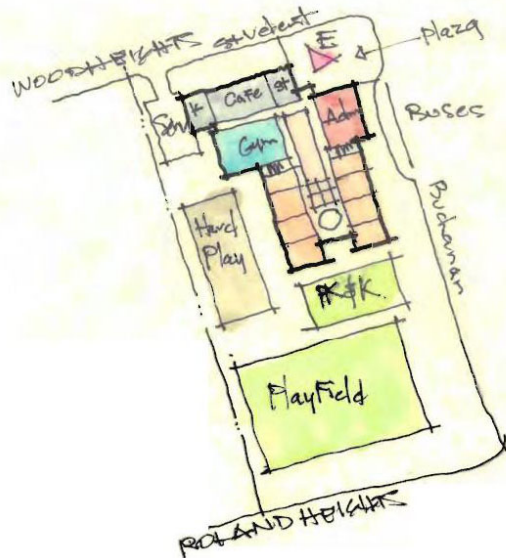
↔ Two-Way Traffic

→ Major Pedestrian Approach



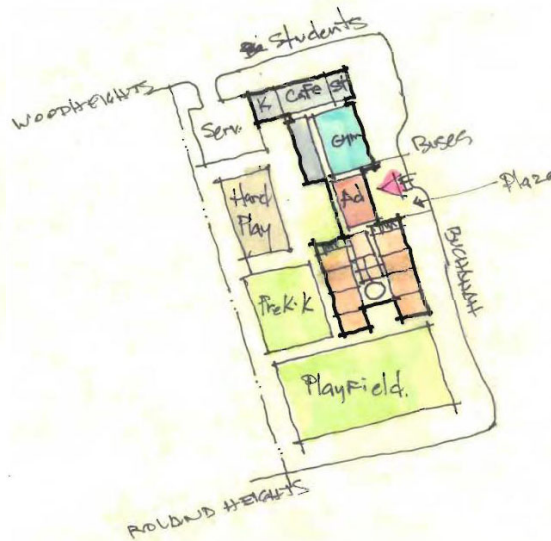
Concepts Explored

Option 1



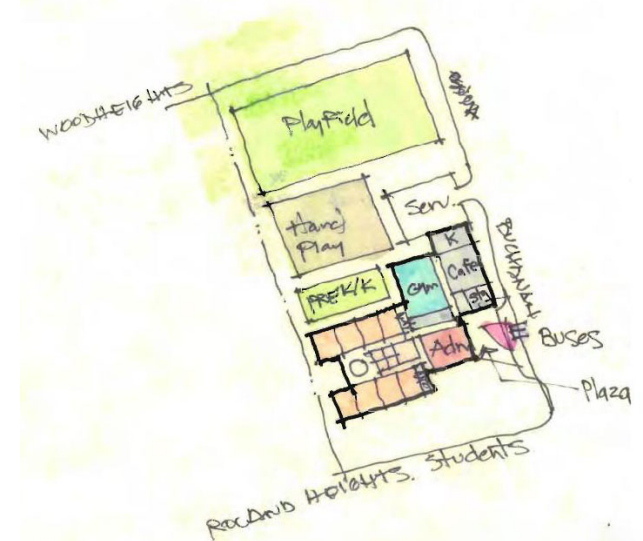
- North-south classroom wing orientation
- Service drive off of Wood Heights
- Drop off on Buchanan

Option 2



- North-south classroom wing orientation
- Service drive off of Wood Heights
- Drop off on Buchanan
- Elongated building plan will require mitigation for grade changes

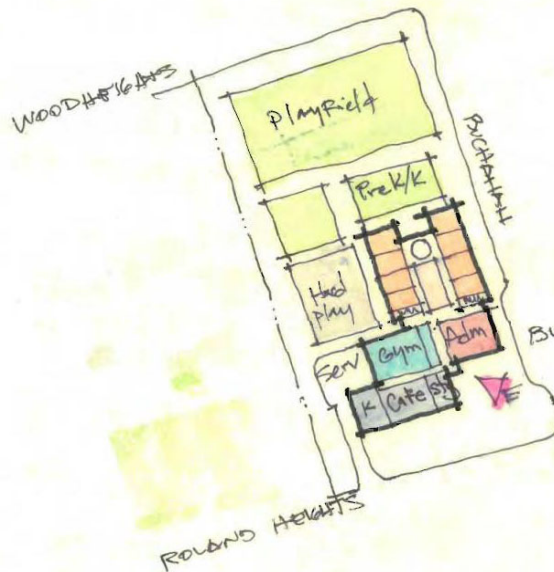
Option 3



- East-west classroom wing orientation
- Service drive off of Buchanan
- Play fields are higher elevation than building

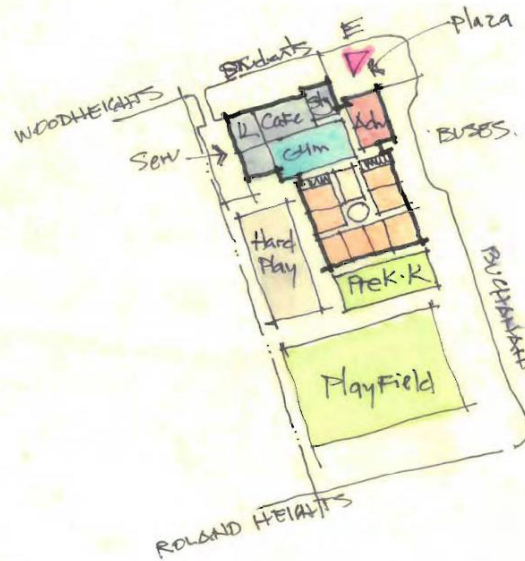
Concepts Explored

Option 4



- North-south classroom wing orientation
- Drop off on Buchanan
- Play fields are higher elevation than building

Option 5



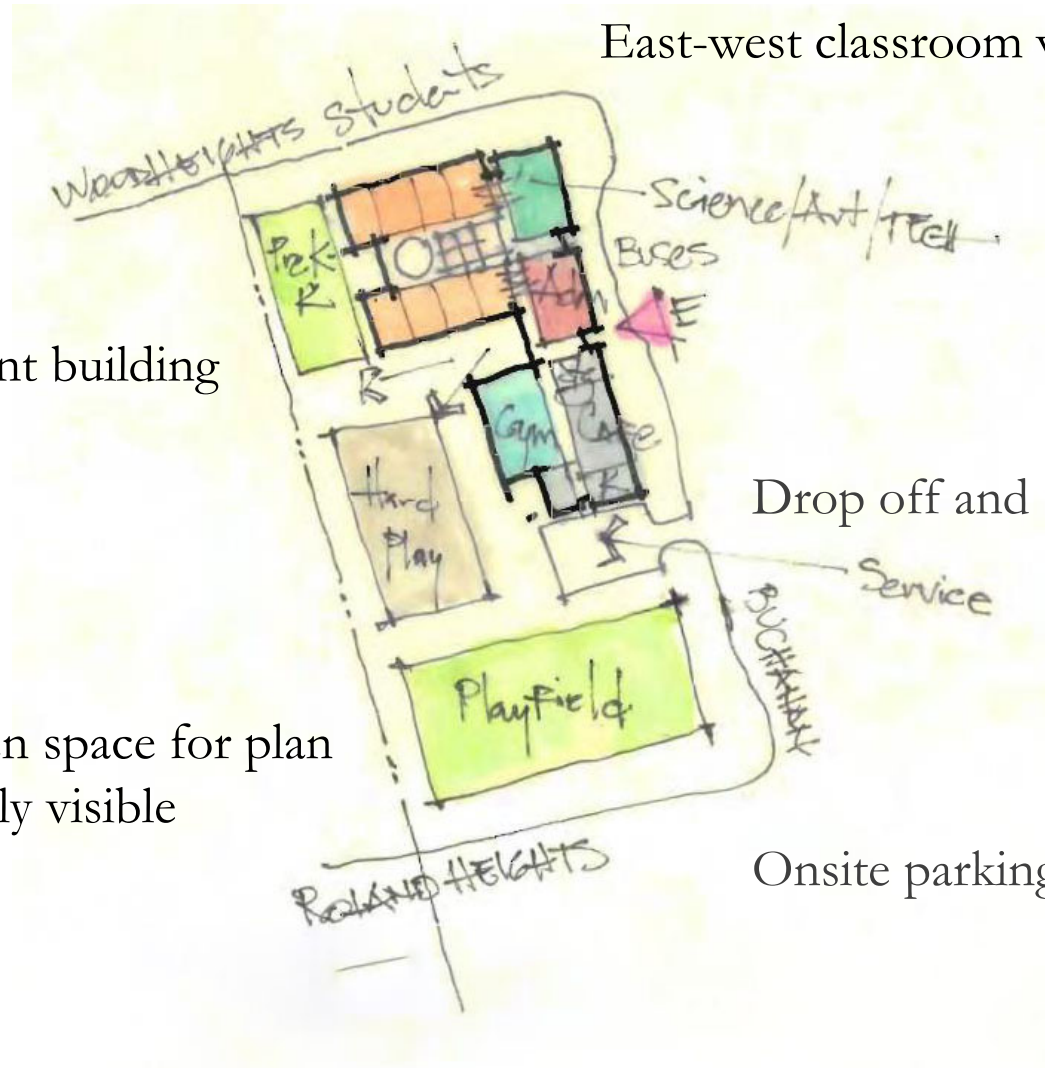
- North-south classroom wing orientation w pod layout
- Drop off on Buchanan
- Service drive off of Wood Heights

Option 6



- East-west classroom wing orientation
- Drop off and service on Buchanan
- Play areas visible to the neighborhood

Preferred Concept



East-west classroom wing orientation

Compact efficient building

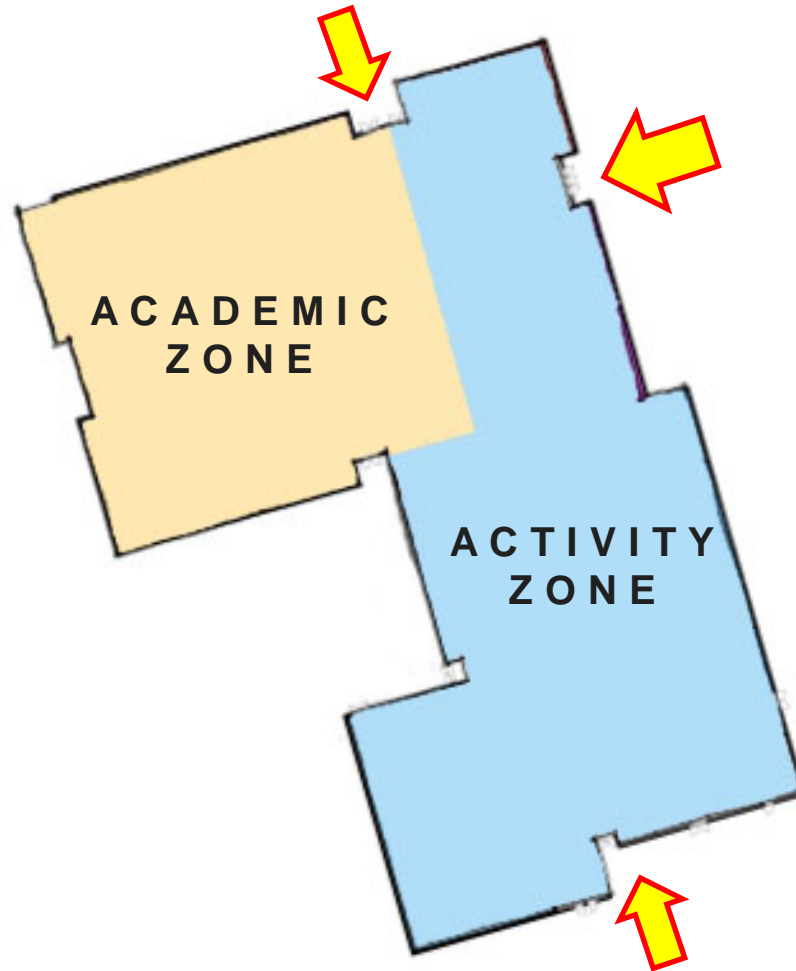
Drop off and service on Buchanan

Maximizes open space for plan
Play areas highly visible

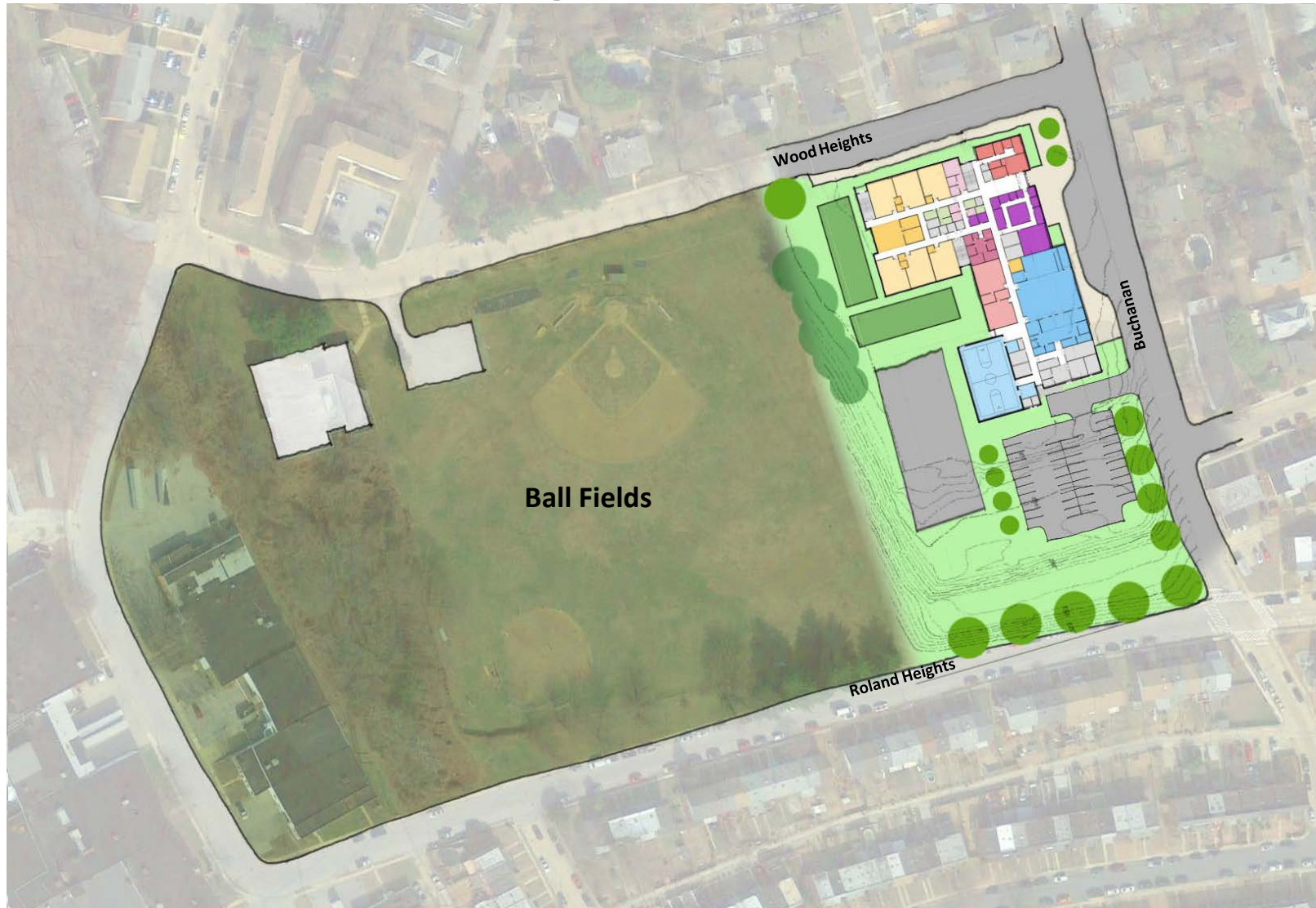
Onsite parking

Building Organization

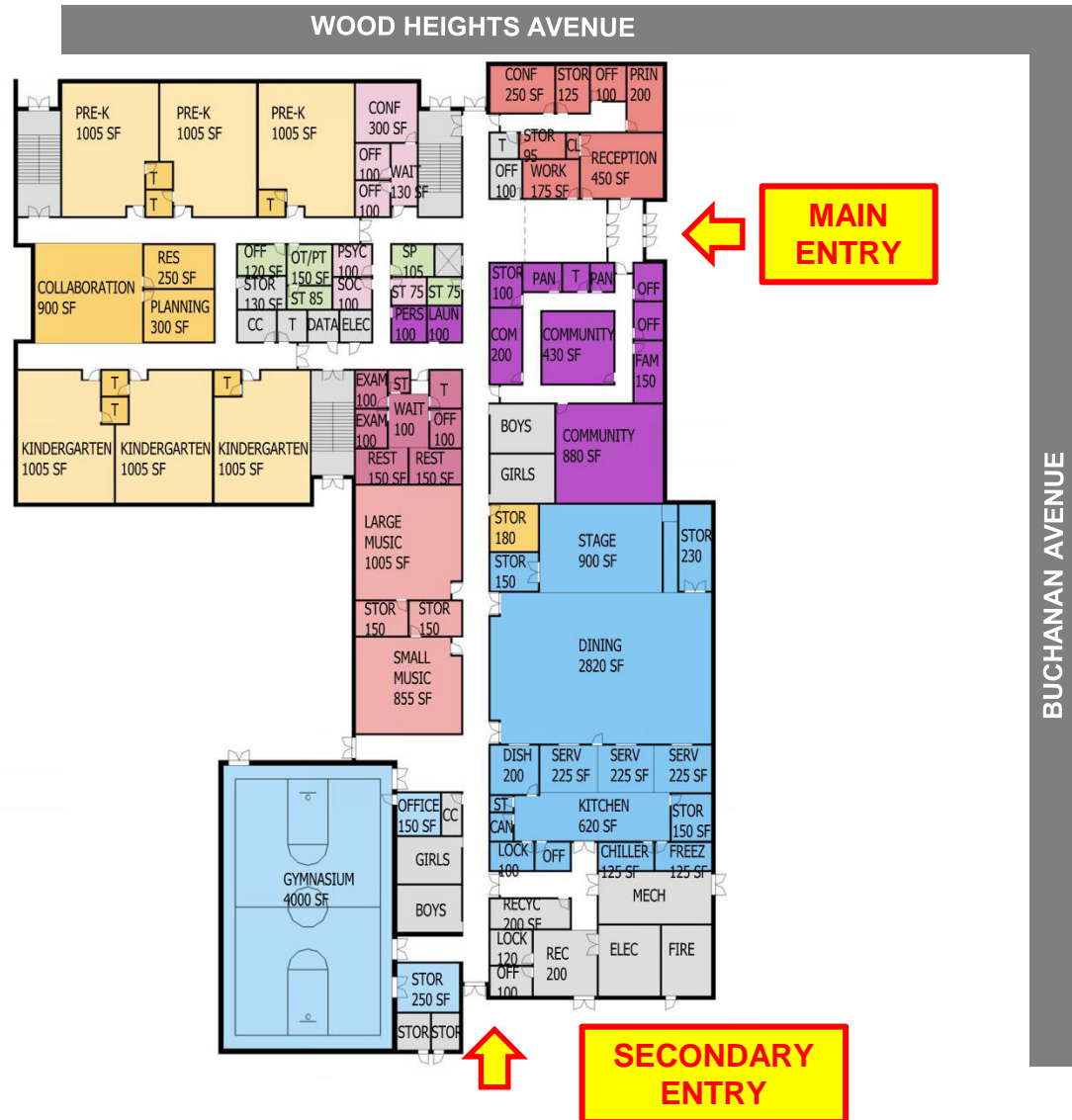
- Administrative functions supervise main building entries
- New elementary school classroom wing
- Music Rooms in close proximity to stage
- Separate the building into Activities and Academic zones to allow for secure control of building after hours
- Community space located in the activity zone



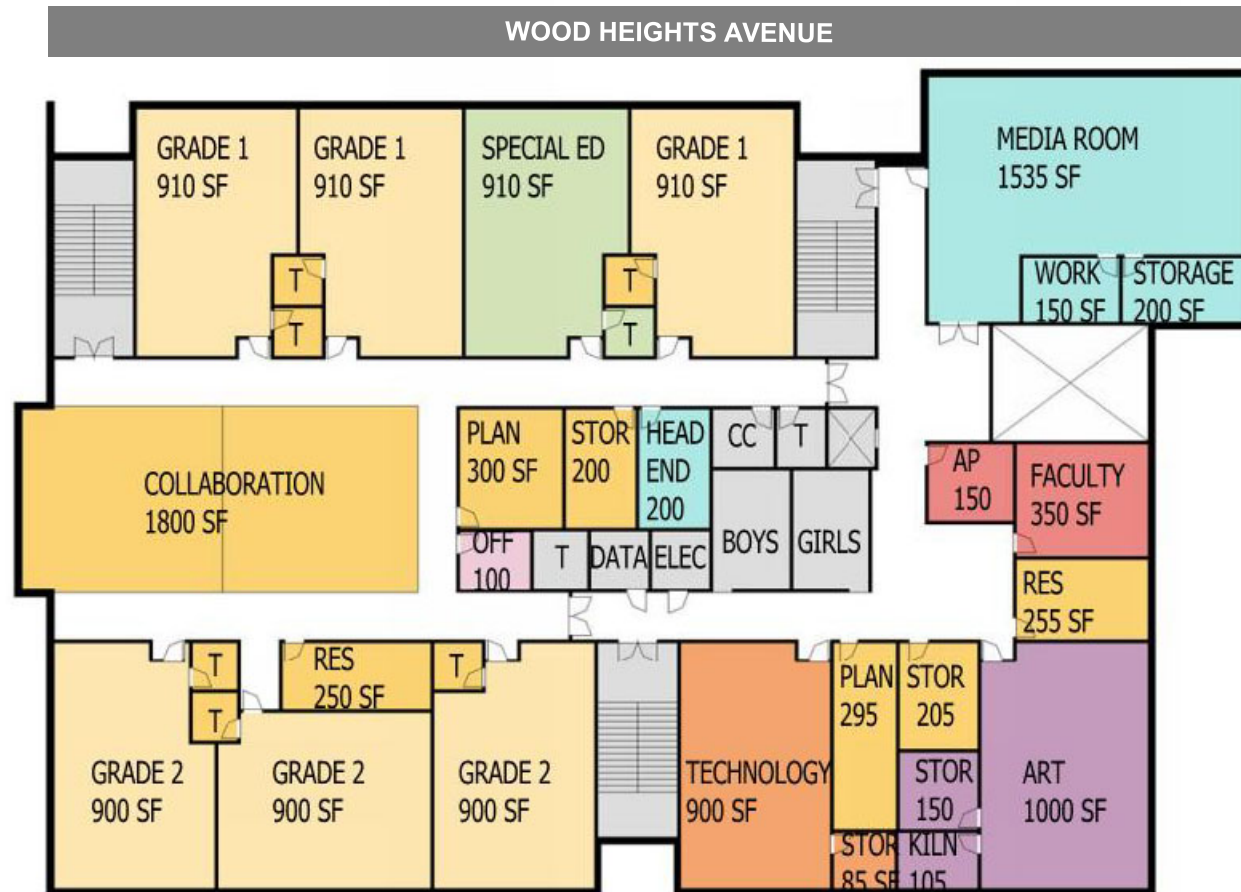
Site Plan



Ground Level Floor Plan

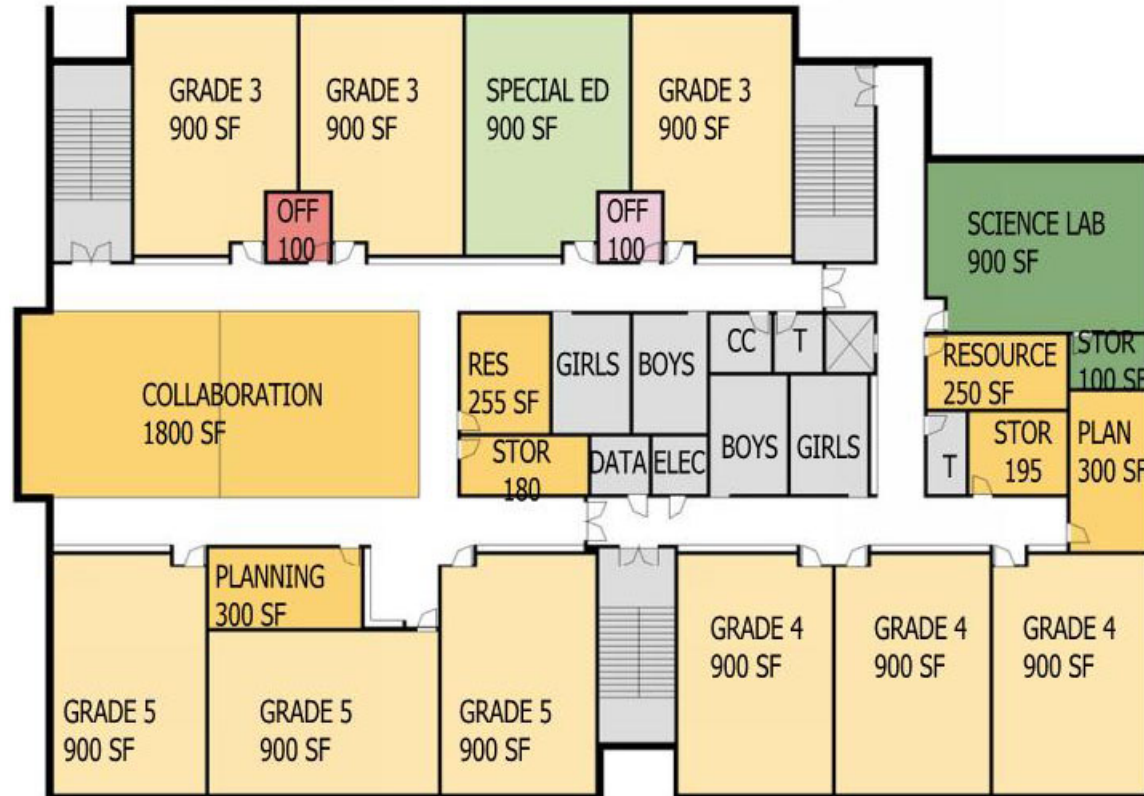


First Level Floor Plan

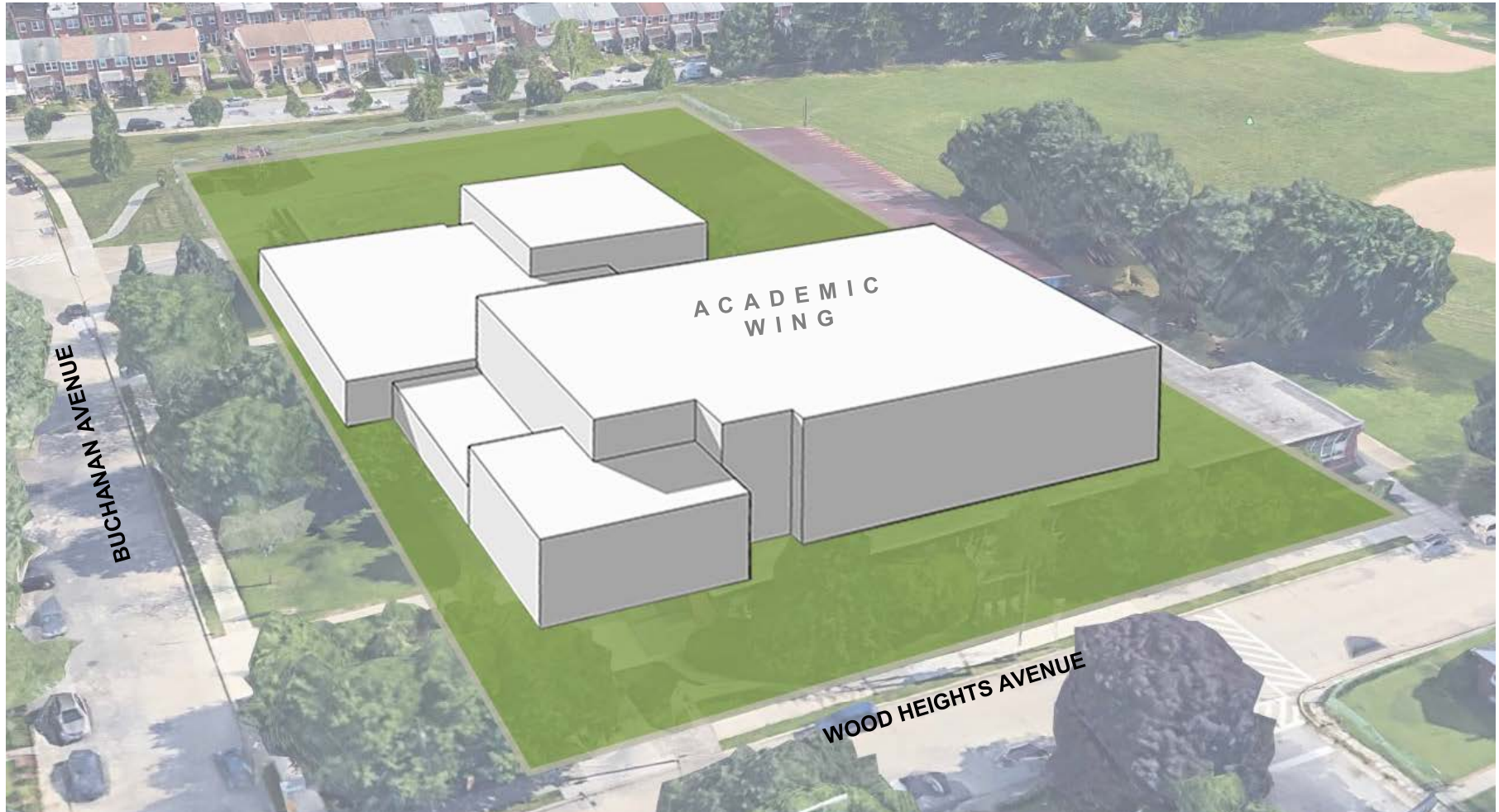


Second Level Floor Plan

WOOD HEIGHTS AVENUE



Northeast Aerial View of Massing



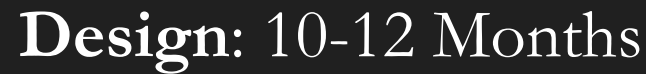
Southwest Aerial View of Massing



Dates subject to change*

Pre-Design: 2-4 months
18-24 months

Design: 10-12 months



JULY 2018
COMMUNITY SPACE DEVELOPMENT

Friday, July 20, 2018
FEEDBACK DUE

Tuesday, July 10, 2018 | 2:00 PM
IN-SCHOOL DESIGN REVIEW

Questions

Social Media



CONTACTS

**21st Century School Buildings
Program Office
(443) 642-4600**

www.baltimore21stcenturyschools.org



Instagram

@21stCSBaltimore

Twitter

@21stCSBaltimore

Facebook

@21stCenturySchoolBuildingsProgram

Thank You!



This presentation is brought to you by the
21st Century School Buildings Program.

www.baltimore21stcenturyschools.org

21st Century School Buildings Program

Baltimore City Public Schools
200 East North Avenue Room 407-B
Baltimore MD 21202
(443) 642-4600

Cheri Vincent

Interim Executive Director, 21st Century Buildings Program
Baltimore City Public Schools

Gary McGuigan

Senior Vice President, Capital Development Division
Maryland Stadium Authority

James T. Smith, Jr.

Chief of Strategic Alliances
City of Baltimore

Robert Gorrell

Executive Director, Public School Construction Program
State of Maryland

BALTIMORE CITY
PUBLIC SCHOOLS

